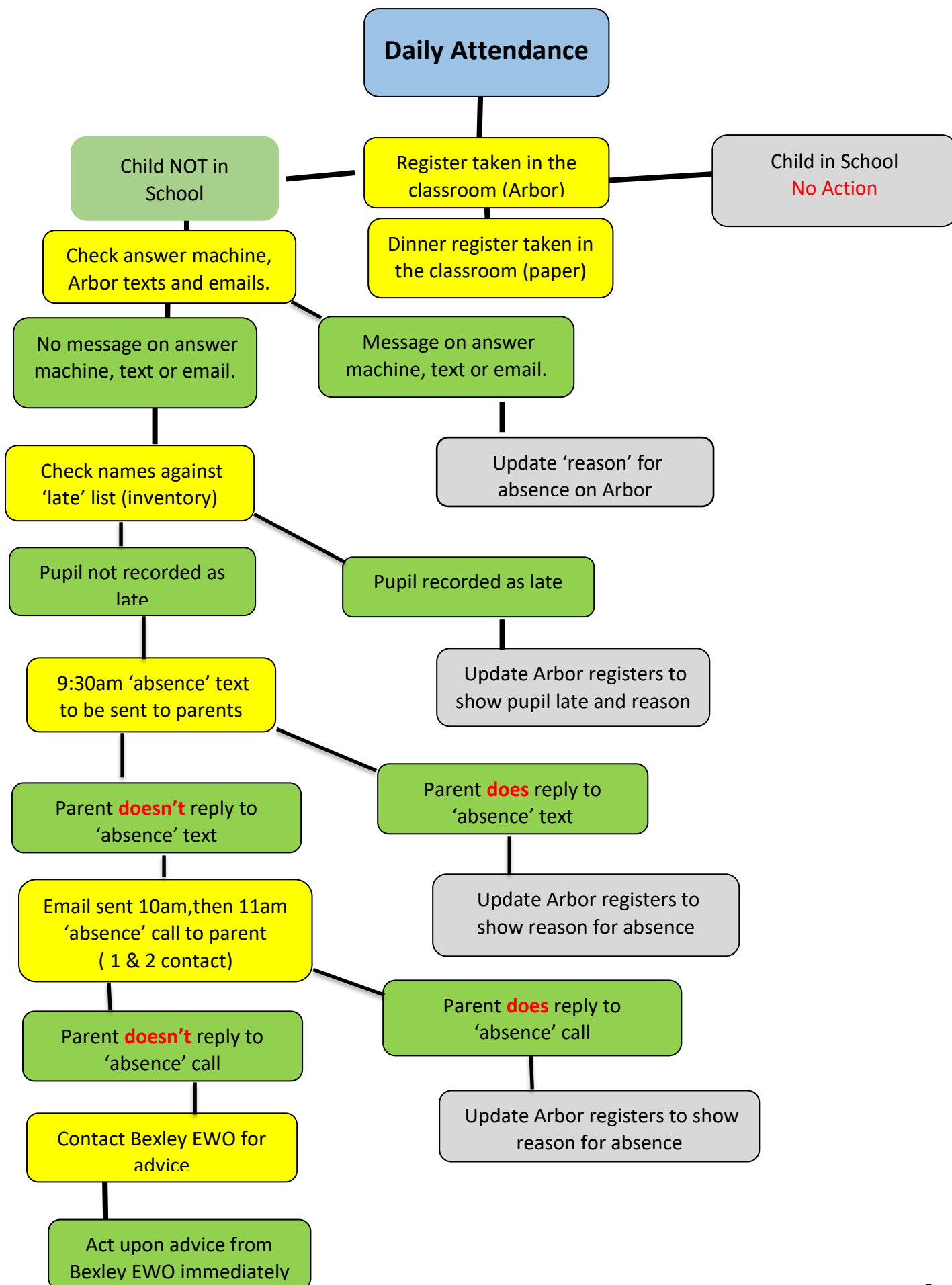


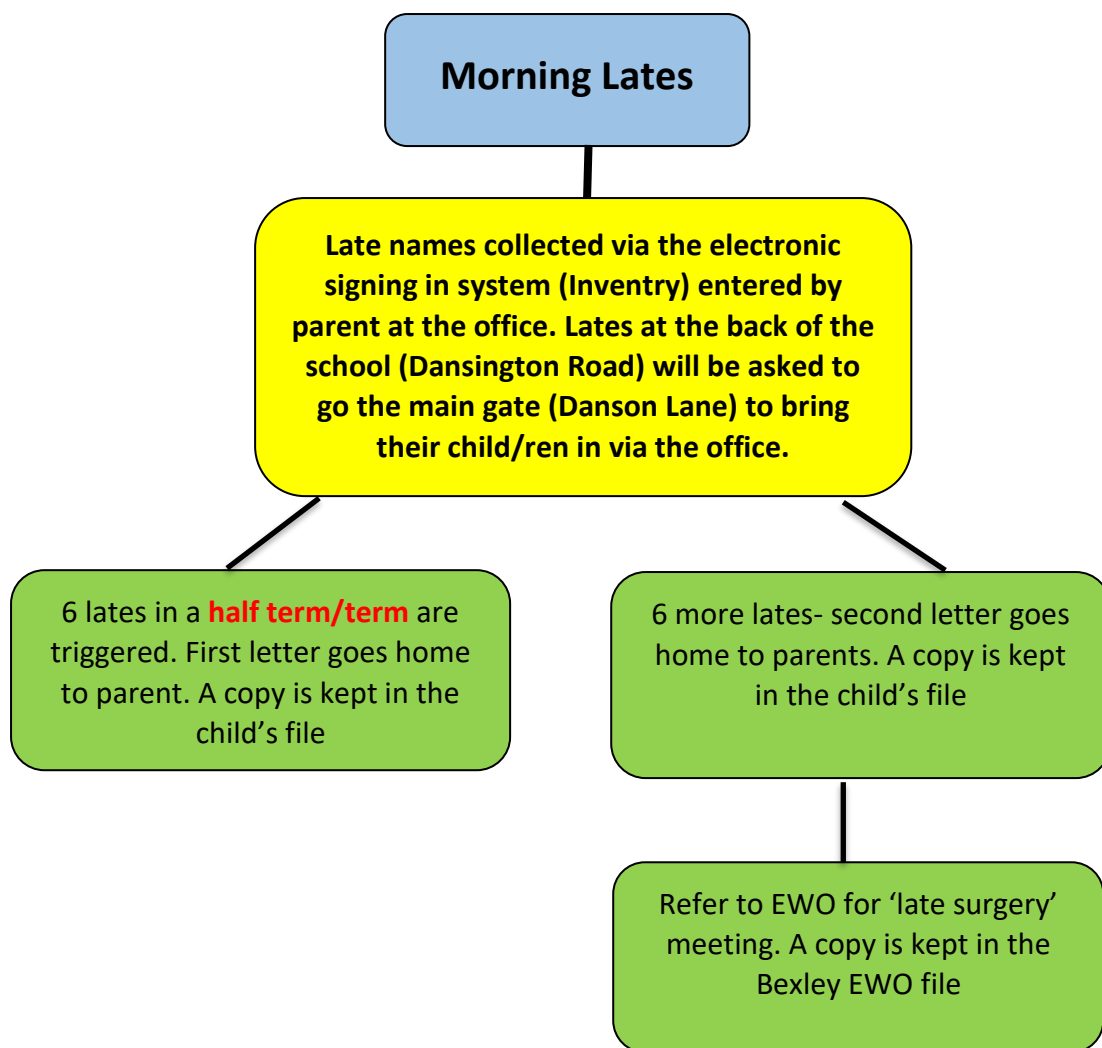


# Pupil Attendance and Punctuality

*Nurture-Believe-Inspire-Achieve*

## Daily Attendance





#### Appendices

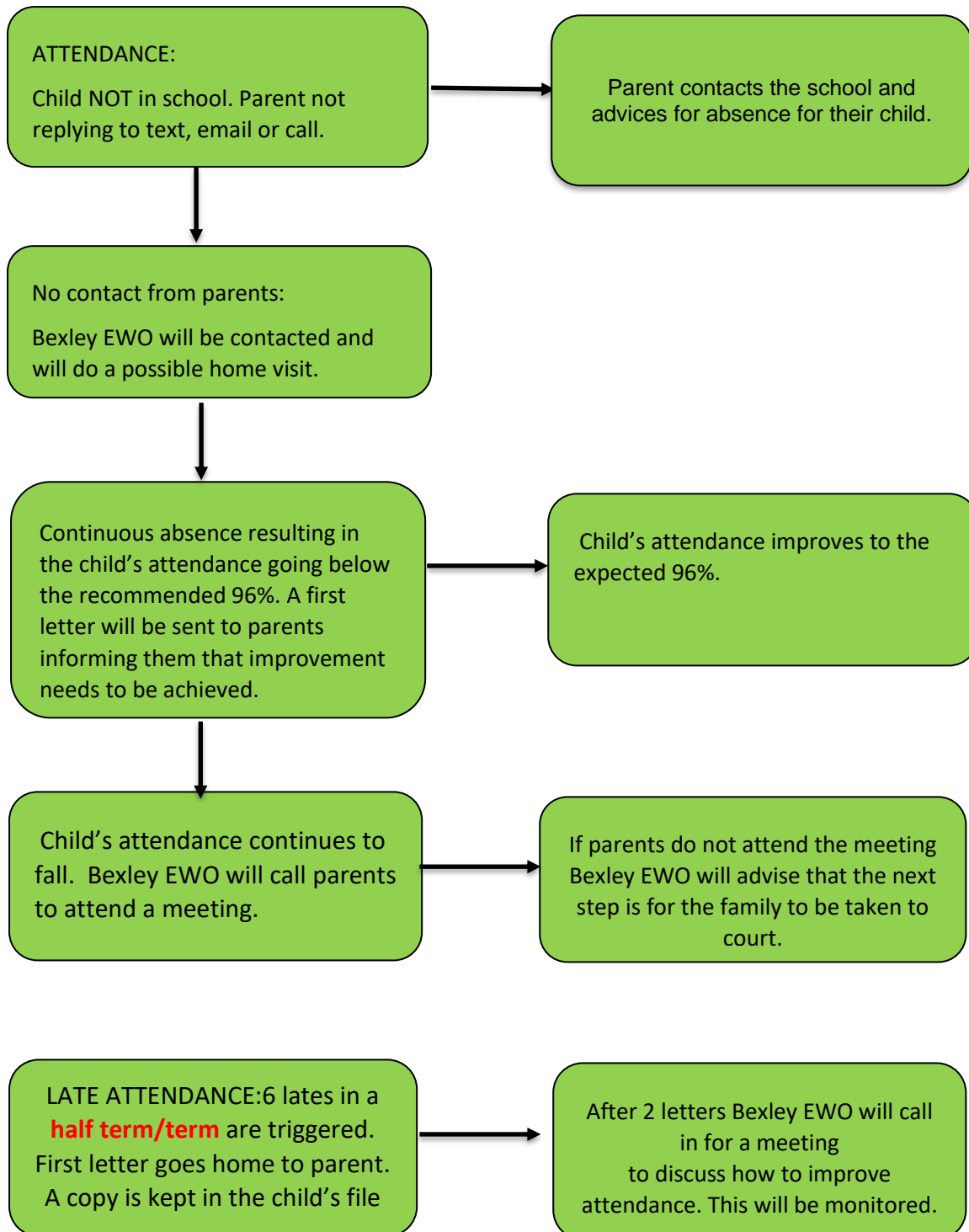
1. Morning Late Letter 1
2. Morning Late Letter 2
3. Bexley EWO 'late surgery' letter

## **Afternoon Lates**

**Parents who are late collecting their child/ren are contacted by the school office to see what has happened.**

**Parents are given a 15-minute window to collect. Parent advised that after this, their child/ren will be taken to the ASC and informed that a charge will apply. You must pick your child up straight away.**

## Bexley EWO Council Service



## Absence from school.

